

# Control of Real and Reactive Power Flow Using Unified Power Flow Controller (UPFC) in Integrated Power System (Electrical Grid and Wind Power Generation)

*Sandeep Sharma\**, *Ishita Srivastava*, *Soumye Singh*, *Sarthak Rawat*

Department of Electrical and Electronics, Bharati Vidyapeeth College of Engineering,  
New Delhi, India

## Abstract

*Unified power flow controller (UPFC), as the name suggests is used to control the power flow in transmission systems. UPFC is a kind of flexible alternating transmission system (FACTS device) which is able to control both active and reactive power along with voltage magnitude as well as phase angle. This paper proposes the use of phasor model of UPFC to control the real and reactive power flow in integrated power system (consist electric grid and wind power generator). The DFIG technology facilitates us to get maximum energy from the wind for wind speeds of low value by optimizing the turbine speed, while minimizing mechanical stresses on the turbine. The modeling is done in Matlab/Simulink using IEEE 5-bus and 10-bus system incorporating UPFC. The models are simulated to find the value of real and reactive power flow and waveforms for each of the model. The simulation results show clearly that the model using UPFC have enhanced value of real power compared to the model without UPFC. The numerical result of real power made very clear that the UPFC can be used in integrated power system for the maximum use of the transmission lines.*

**Keywords:** Wind power generation, DFIG, unified power flow controller

\***Author for Correspondence** E-mail: sandeep00732@gmail.com

## INTRODUCTION

The concept of UPFC was first defined by L. Gyugyi in 1991. The Unified Power Flow Controller (UPFC) is able to control almost every parameter of the power system like real power and reactive power, phase angle, impedance and voltage magnitude. Initially a series power flow controller (SPFC) was used which was joined with transmission line by a series transformer. This device can absorb and generate reactive power. If SPFC is provided with some means by which it can interchange real power in both directions i.e. from the system to device and vice versa, then it is termed as unified power flow controller [1]. Unified power flow controller (UPFC) is known as the most flexible FACTS device. UPFC is able in improving the transmission capability. This is clearly verified by the Kansai electric power corporation using analog power system simulator (APSP) [2].

A better profile of real and reactive power is achieved using UPFC [3]. In this paper, two models consisting of IEEE 5-bus system and

10-bus systems are studied over two stages: one is in which UPFC is not installed and other in which UPFC is installed. The simulation results show clearly that the value of real and reactive power of 5-bus and 10-bus that are enhanced/controlled in comparison to the model simulated without UPFC.

Matlab/Simulink software is used to design power system model incorporating UPFC [4–7]. A paper based on coordination between real and reactive power is presented using MATLAB by Kannan *et al.* [4]. In this paper, a model is designed using two sources, three transformers, one series inverter, and one shunt inverter incorporated with UPFC. The behavior of real and reactive power is examined. A paper analyzing the real and reactive power with UPFC is presented by Liming *et al.* [5]. In this paper the UPFC is connected in the middle of the line. Results of the simulation show two successfully analyzed different cases: 1) effect of UPFC in changing real power, 2) effect of UPFC in changing reactive power. A matrix converter based



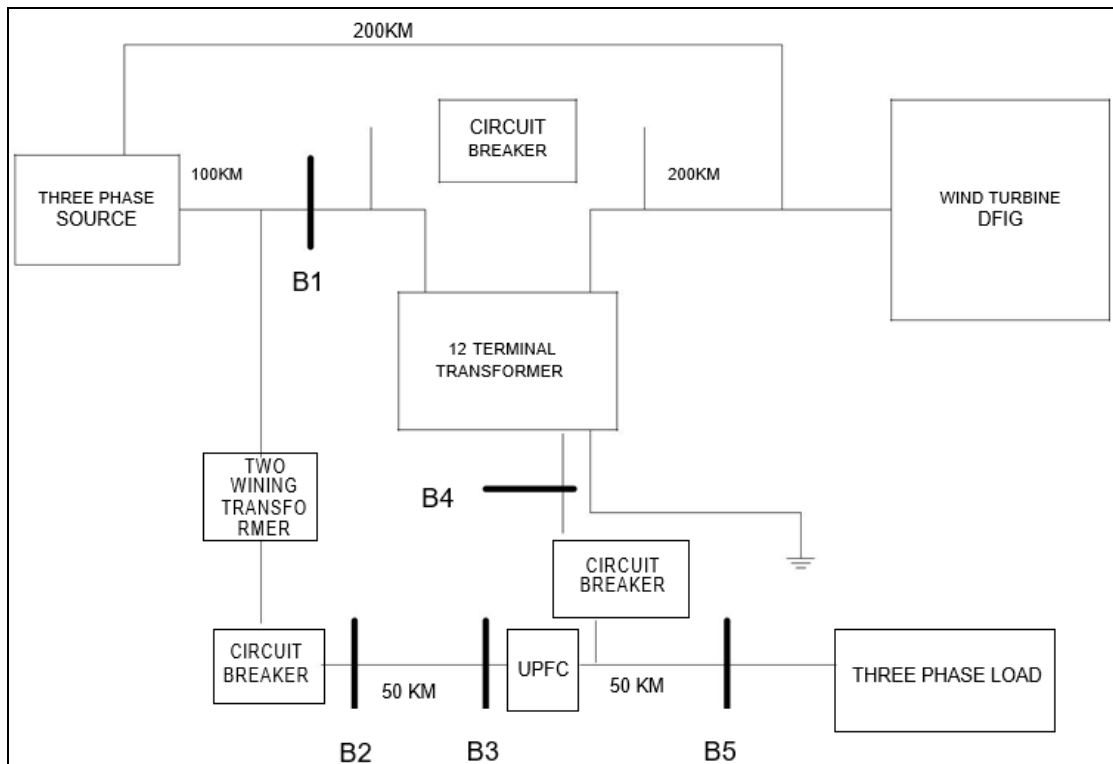


Fig. 2: Single Line Diagram of Integrated Power System of 5-Bus System with UPFC.

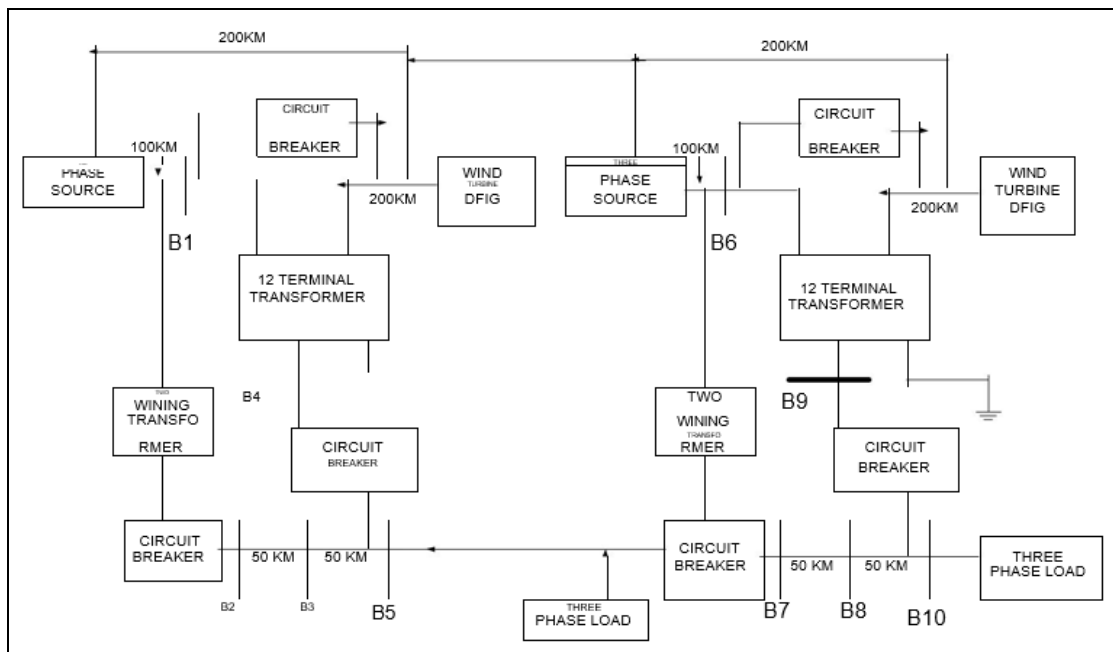


Fig. 3: Single Line Diagram of Integrated Power System of 10-Bus System without UPFC.

Table 1: Real Power Values at Different Buses of Model-1 for Stages-I and II.

Bus Sr. No.	Real Power of Model-1 (With UPFC) (MW)	Real Power of Model-2 (Without UPFC) (MW)
B1	31.82	11.74
B2	111.3	18.75
B3	64.59	10.14
B4	-4.747	-0.8216
B5	3.553	0.6149

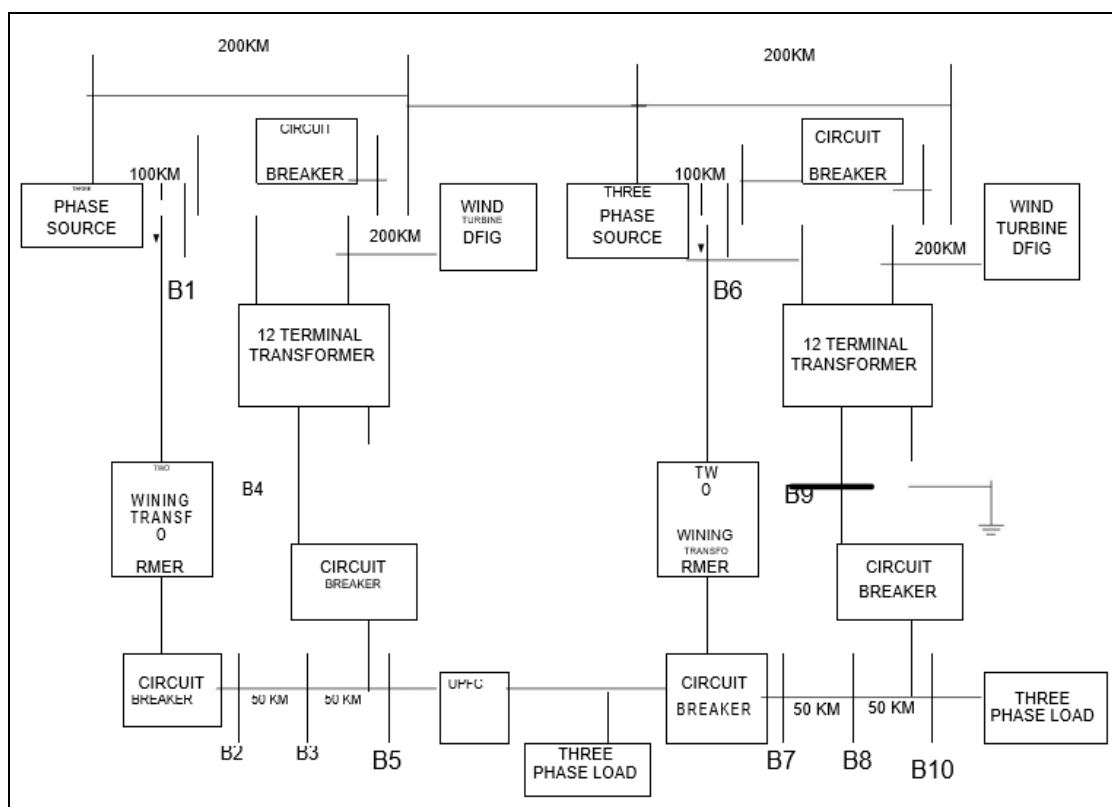


Fig. 4: Single Line Diagram of Integrated Power System of 10-Bus System with UPFC.

Table 2: Real Power Values at Different Buses of Model-2 for Stages-I and II.

Bus Sr. No.	Real Power of Model -2 (with UPFC) (MW)	Real Power of Model-2(without UPFC) (MW)
B1	114.7	121.3
B2	191.8	158.9
B3	115.4	92.37
B4	-39.91	-29.32
B5	-2.131	-4.55
B6	107.7	61.87
B7	5.613	4.123
B8	3.035	2.229
B9	-0.2449	-0.1791
B10	0.1841	0.1353

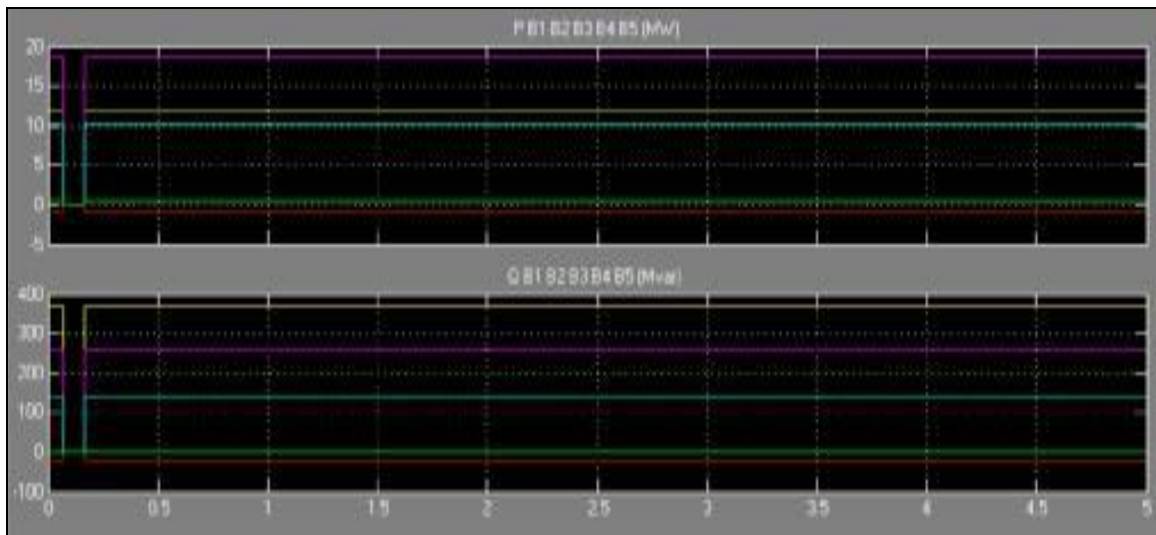
## RESULTS AND DISCUSSION

Simulation results are compiled in two tables (Tables 1 and 2) and twelve waveforms (Figures 5–10). The results show clear evidence of enhancement/control of real and reactive power for the said power system models.

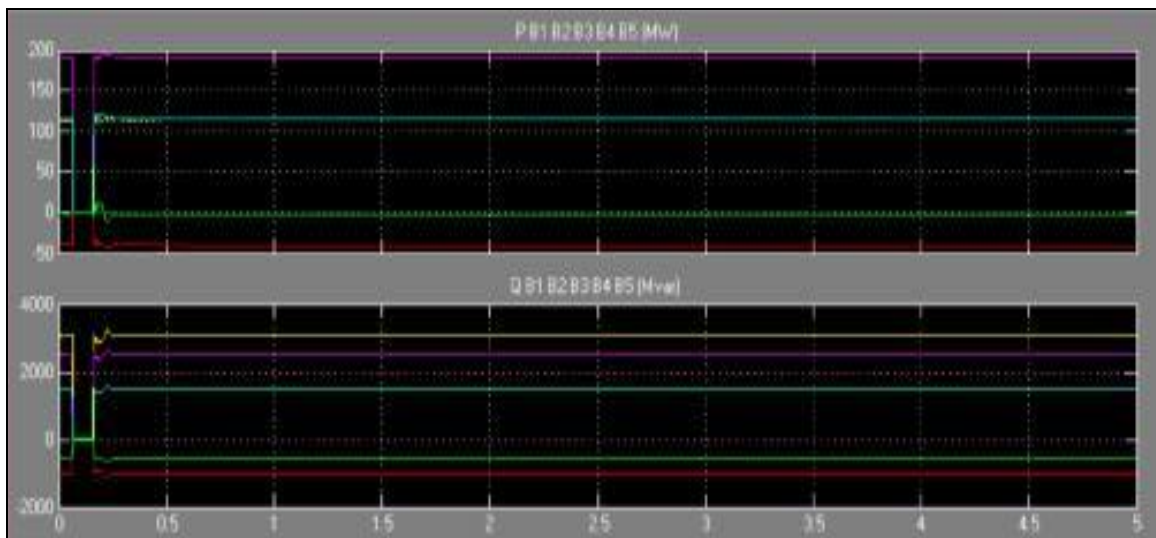
The waveform pattern is as shown in Figures 3 and 4. In this pattern, the run time of model is 5 sec. The active and reactive power dips from 0.066 to 0.166 sec. This dip occurs because in

this particular time, the circuit breakers operate.

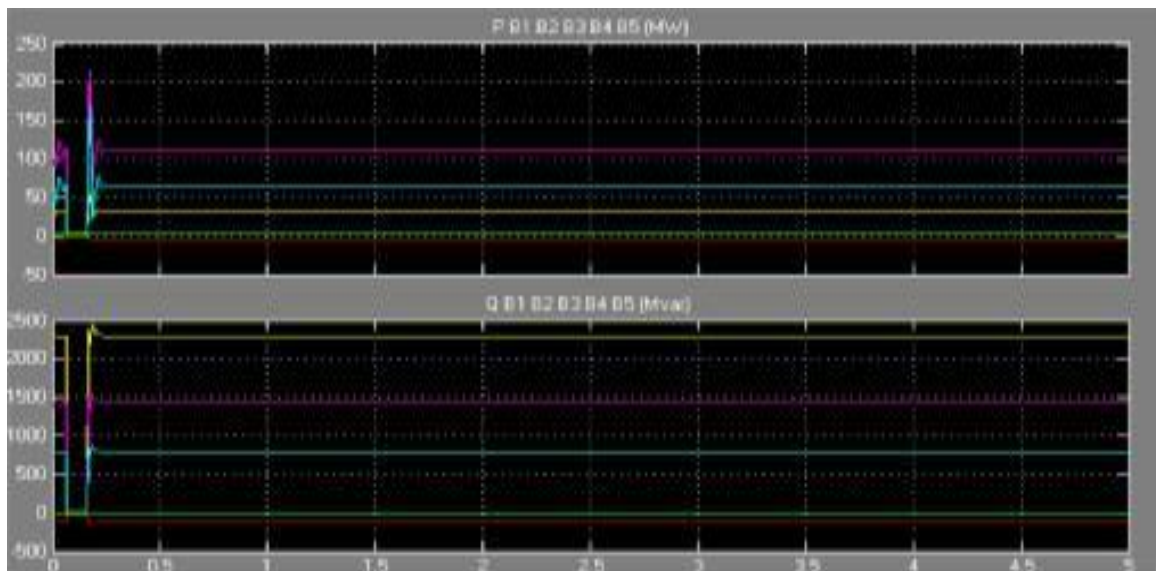
From Table 1 it can be observed that the highest value of real power is at bus no. 2 of model-1. From Table 2 it made very clear that highest value of real power is at bus no. 2 for model-2. So it is clear from the result of simulation that there is an enhanced value of active and reactive power in the scope for the model in which UPFC is installed as compared to the value of active and reactive power of the scope of the model in which UPFC is not installed.



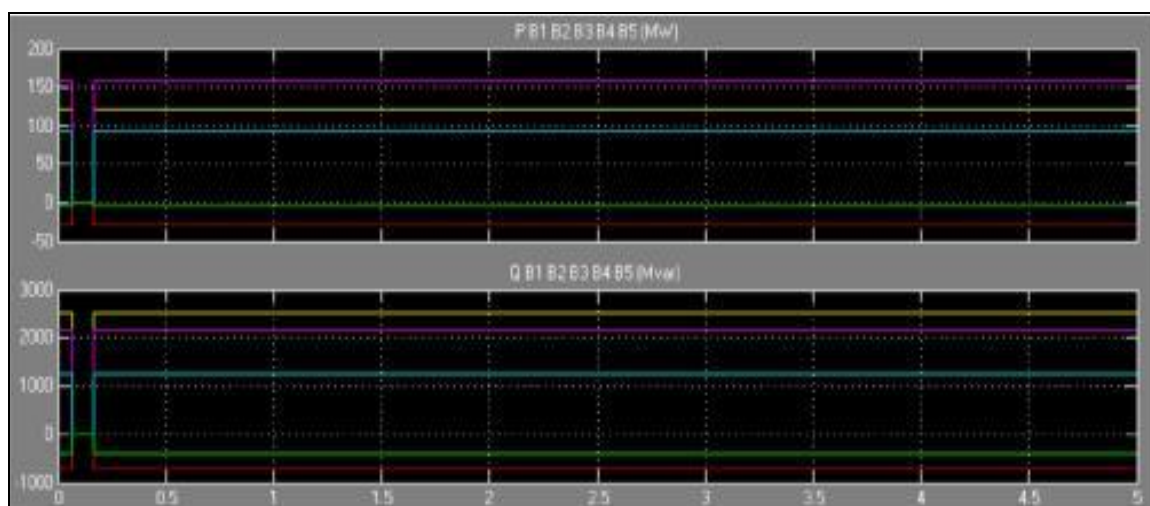
**Fig. 5:** Real Power and Reactive Power Waveform without UPFC for Model-1.



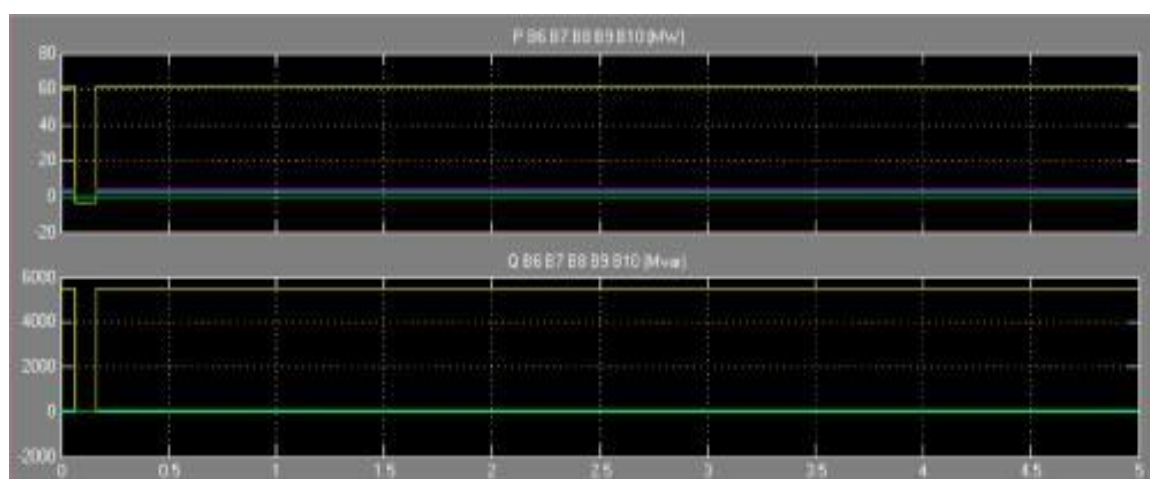
**Fig. 6:** Real Power and Reactive Power Waveform with UPFC for Model-1.



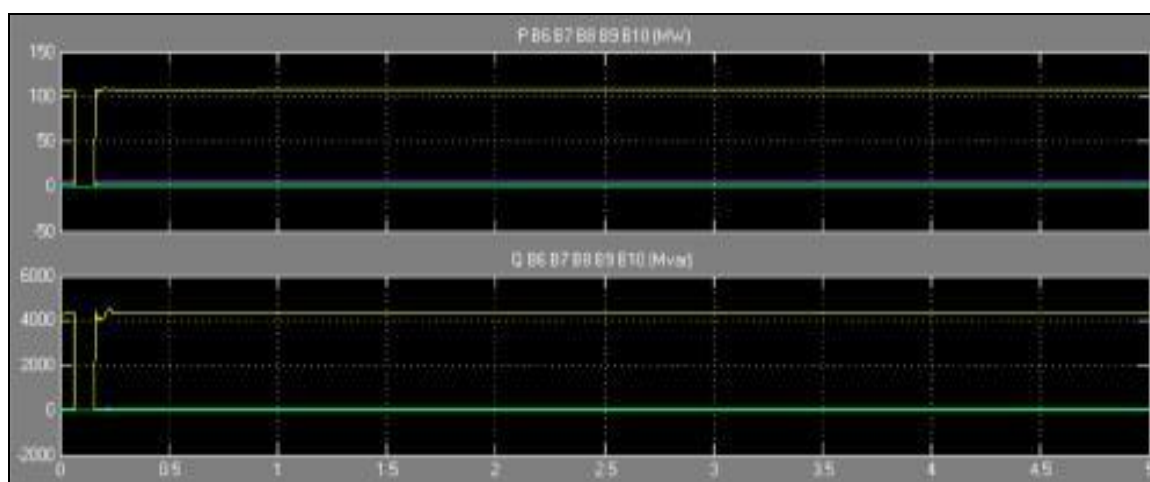
**Fig. 7:** Real Power and Reactive Power Waveform for Buses (B1-B5) without UPFC of Model-2.



**Fig. 8:** Real Power and Reactive Power Waveform for Buses (B6-B10) without UPFC of Model-2.



**Fig. 9:** Real Power and Reactive Power Waveform for Buses (B1-B5) with UPFC of Model-2.



**Fig. 10:** Real Power and Reactive Power Waveform for Buses (B6-B10) with UPFC of Model-2.

## CONCLUSION

Unified power flow controller is used to control the value of active and reactive power. A phasor model of UPFC is used to

enhance/control the real power for IEEE 5-bus and 10-bus system. This paper validates the successful implementation of phasor model of UPFC for real and reactive power

enhancement and control for integrated power system.

## REFERENCES

1. Nelson RJ, Bian J, Williams SL. Transmission Series Power Flow Control. *IEEE Trans Power Del.* Jan 1995; 10(1): 504–510p.
2. Morioka Y, Kato M, Mishima Y, *et al.* Implementation of Unified Power Flow Controller and Verification for Transmission Capability Improvement. *IEEE Trans. Power Syst.* May 1999; 14(2): 575–581p.
3. Haifeng Zhou, Haifeng Wang, Aggarwal RK, *et al.* Performance Evaluation of a Distance Relay as Applied to a Transmission System with UPFC. *IEEE Trans Power Del.* Jul 2006; 21(3): 1137–1147p.
4. Kannan S, Jayaram S, Salama MMA. Real and Reactive Power Coordination for a Unified Power Flow Controller. *IEEE Trans Power Syst.* Aug 2004; 19(3): 1454–1461p.
5. Liming Liu, Pengcheng Zhu, Yong Kang, *et al.* Power-Flow Control Performance Analysis of a Unified Power-Flow Controller in a Novel Control Scheme. *IEEE Trans Power Del.* Jul 2007; 22(3): 1613–1619p.
6. Monteiro J, Silva JF, Pinto SF, *et al.* Matrix Converter-Based Unified Power-Flow Controllers: Advanced Direct Power Control Method. *IEEE Trans Power Del.* Jan 2011; 26(1): 420–430p.
7. Verveckken J, Silva F, Barros D, *et al.* Direct Power Control of Series Converter of Unified Power-Flow Controller with Three-Level Neutral Point Clamped Converter. *IEEE Trans Power Del.* Oct 2012; 27(4): 1772–1782p.

### Cite this Article

Sandeep Sharma, Ishita Srivastava, Soumye Singh *et al.* Control of Real and Reactive Power Flow Using Unified Power Flow Controller (UPFC) in Integrated Power System (Electrical Grid and Wind Power Generation). *Research & Reviews: Journal of Physics.* 2018; 7(3): 44–50p.